



MAGNA RACK ASSEMBLY INSTRUCTIONS





BOTTOM PLUGS FIT EASILY INTO THE BOTTOM TRAY ON ANY MAGNA RACK KIT.



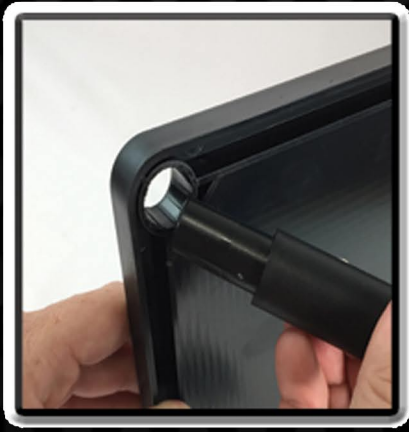
ONCE THE BOTTOM PLUG IS IN PLACE YOU CAN INSERT THE DIFFERENT SIZED LEGS INTO POSITION.



LEGS OF ANY HEIGHT WILL EASILY FIT INTO THE BOTTOM PLUG BY PRESSING FIRMLY INTO POSITION.



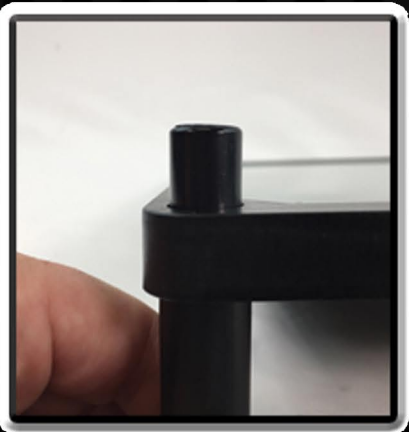
LEGS ARE INSERTED INTO THE BOTTOM OF THE TRAY BY PUSHING THE SMALLER END OF THE LEG INTO THE HOLES.



LEGS ARE INSERTED INTO THE BOTTOM OF THE TRAY BY PUSHING THE SMALLER END OF THE LEG INTO THE HOLES.



THE LEG WILL STICK OUT FROM THE TOP OF THE TRAY GIVING YOU A PLACE TO ATTACH THE NEXT LEG.



A PROPERLY PLACED LEG WILL HAVE ABOUT A 1/2 INCH STICKING UP ABOVE THE TRAY.



THE NEXT LEG WILL EASILY SLIDE ONTO THE LOWER LEG OR PLUG CREATING DIFFERENT HEIGHTS AS PREFERRED.



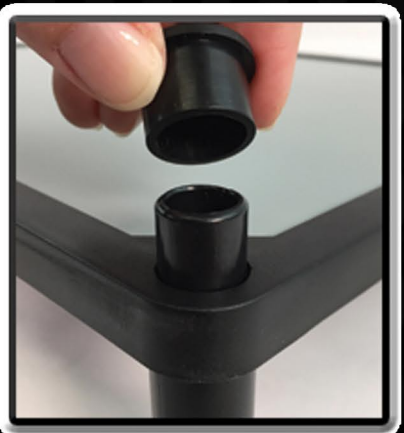
LEGS OF DIFFERENT SIZES CAN BE INSERTED INTO EACH OTHER GIVING EVEN MORE OPTIONS ON THE TRAY HEIGHTS.



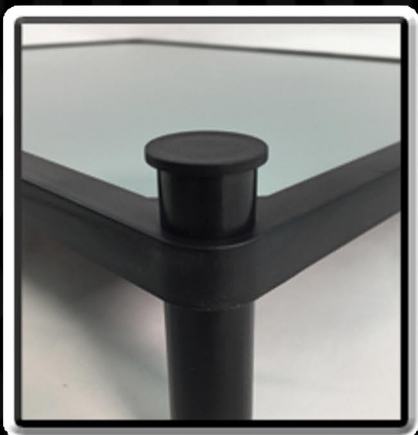
BY COMBINING LEGS YOU CAN CREATE SPACE ALLOWING FOR LARGER MODELS THAT NEED MORE HEIGHT.



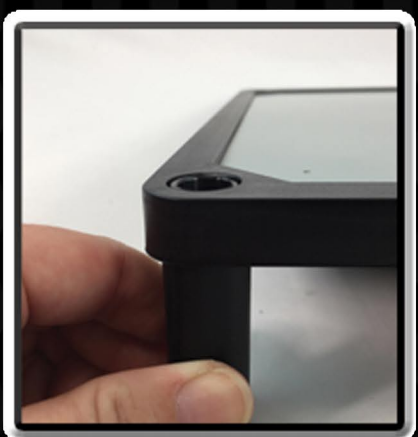
THE TOP RACK WILL ALWAYS NEED A SHORT OR LONG LEG THAT WILL ALLOW FOR A FLUSH OR PADDED ASSEMBLY.



THE PADDED ASSEMBLY USES THE TOP PLUG TO KEEP THE LEGS IN PLACE AND ALSO PADS THE TRAY FROM THE BAG LID.



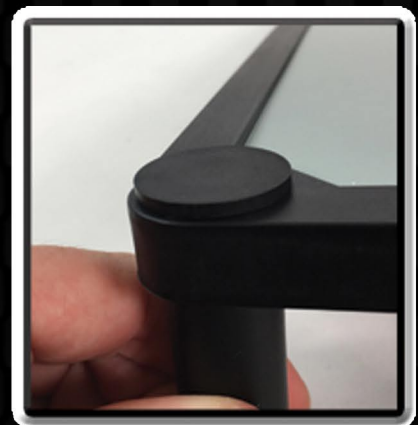
WITH THE TOP PLUG IN PLACE THE TRAY HAS A FULL 1/2 INCH OF PROTECTION FROM THE LID OF THE BAG.



BY USING THE SHORTER TIPPED 2 INCH LEG YOU CAN CREATE A FLUSH MOUNTED LOOK BASED ON HOW YOU PREFER YOUR KIT.



PLACE THE TOP CAP INTO THE SHORT 2 INCH LEG AND PUSH DOWN FIRMLY LOCKING THE CAP AND LEG INTO PLACE.



THE FLUSH MOUNTED LOOK GIVES AN EVEN APPEARANCE ALLOWING YOU TO USE THE MAGNA RACKS AS A DISPLAY.



**WHEN INSTALLING MAGNA
RACK SLIDERS ALWAYS
PLACE THE ORIGINAL MAGNA
RACK TRAY (THE ONE THAT
DOESN'T SLIDE) ON THE TOP.**

